



# Three-Person Mechanics Changes

A change has been made in three-person mechanics that removes the requirement for when the lead official calls a foul and the ball is going from backcourt to frontcourt with no free throws to return to the endline and administer the throw-in.

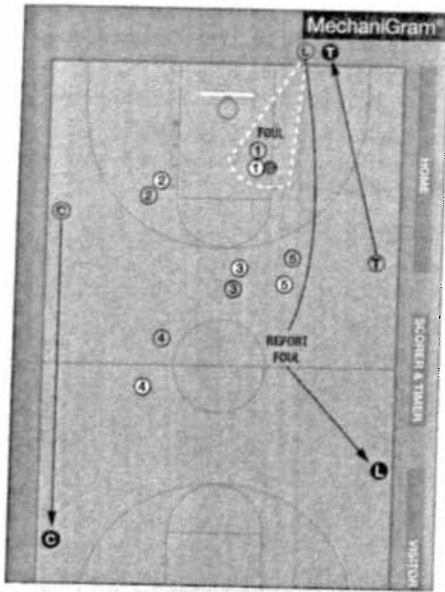
With the change, the lead official will report the foul and then stay table side instead of returning to the endline to administer the throw-in. Either the center or trail official will go to the endline to administer the throw-in.

As in the past, the lead becomes the

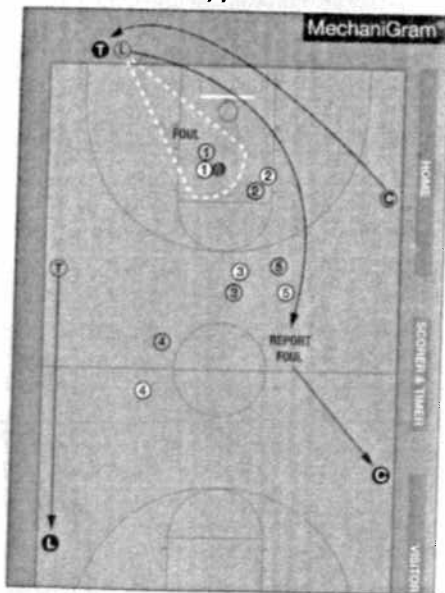
new trail in situations where the foul called is by the center or trail. In two of those situations the lead will handle the throw-in on his or her side of the court and in the other two the lead will go to the opposite sideline to administer the throw-in. □

## LEAD OFFICIAL MAKING THE CALL

Table Side

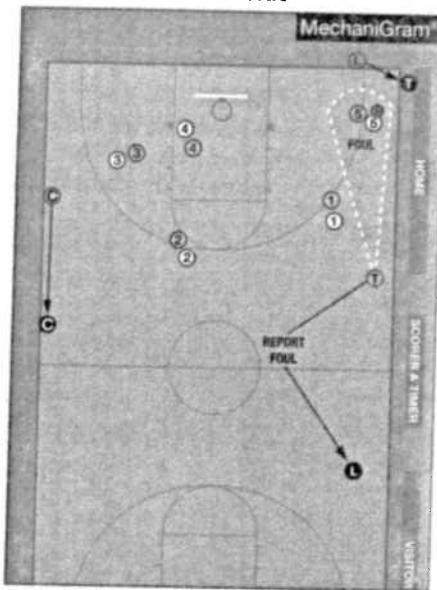


Opposite

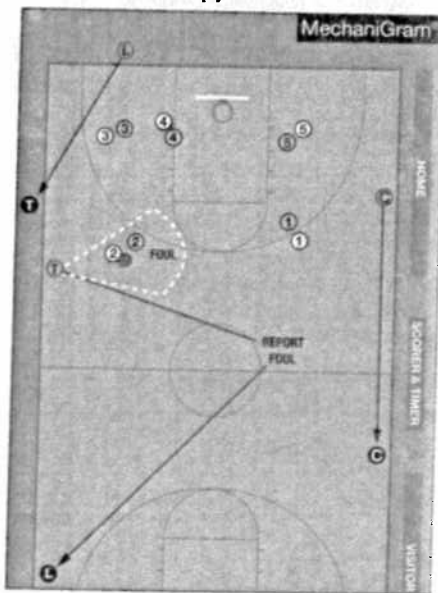


## TRAIL OFFICIAL MAKING THE CALL

Table Side

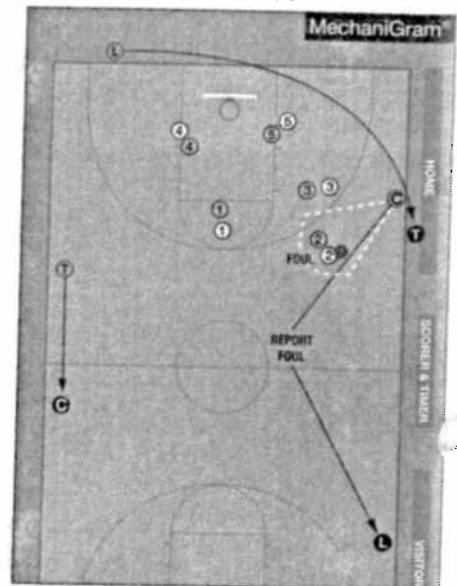


Opposite



## CENTER OFFICIAL MAKING THE CALL

Table Side



Opposite

